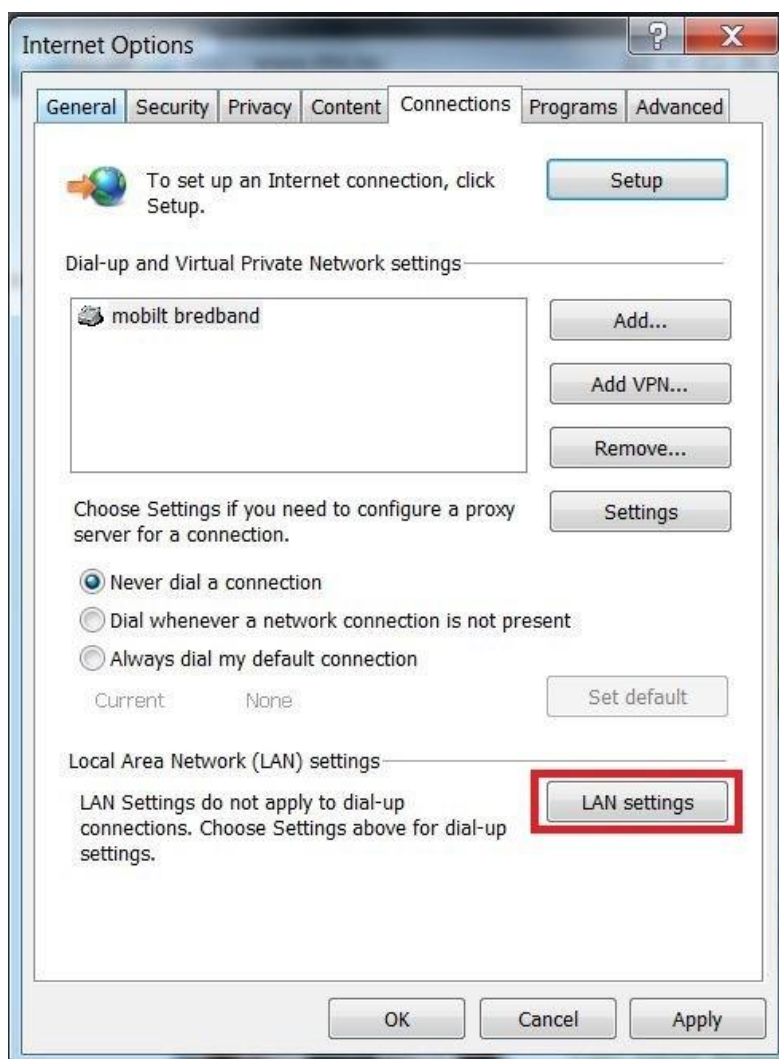


INTERNETTLILGANG MED INTERNET EXPLORER

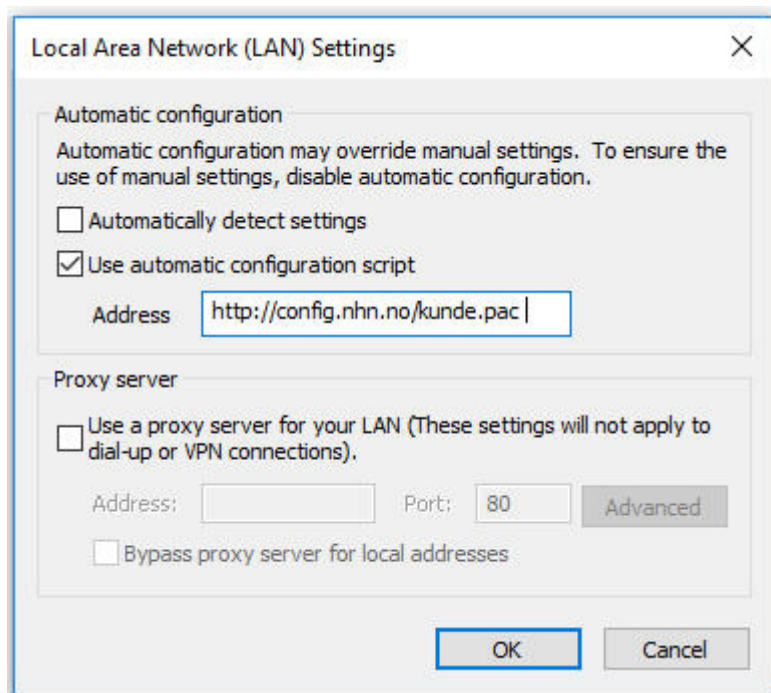
1. Velg Verktøy/Alternativer for Internet (Tools/Internet options)



2. Velg fanen Tilkoblinger/LAN-innstillinger (Connections/LAN settings)



3. Velg Bruk skript for automatisk konfigurasjon (Use automatic configuration script)



4. Trykk OK/OK for å lagre